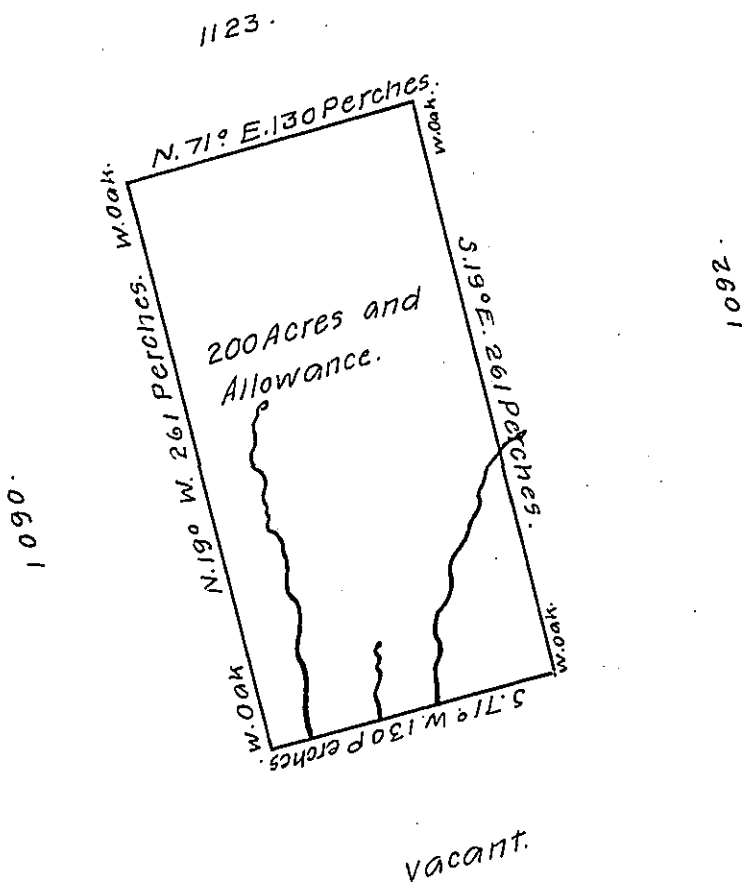


Donation-Land, in District N^o 6
 Lot, N^o MXCI.



In Pursuance of an Act of General Assembly of the State of Pennsylvania,
 passed the twenty-fourth Day of February 1785, intitled, 'An Act for direct-
 ing the Mode of distributing the Donation-Lands promised to the Troops
 by this Commonwealth,' and by Order of the Surveyor-General, with the
 Approbation of the Honourable the Executive-Council, I have surveyed, on
 the Fourth Day of November 1785, the above described Tract of Two hund-
 red Acres of Land, and Allowance of Six per Cent for Roads, &c. No. 1091
 situate in District No. 6, on the west side of the Allegheny River, in the
 County of Westmoreland.

John Lukens, Esq.

Ja. Chrystie Deputy Surveyor

Surveyor-General

IN TESTIMONY that the above is a copy of the original remaining on file in
 the Department of Internal Affairs of Pennsylvania, made
 conformably to an Act of Assembly approved the 16th day of
 February, 1833, I have hereunto set my Hand and caused
 the Seal of said Department to be affixed at Harrisburg,
 this sixteenth day of September, 1908.

Henry Hoover
 Secretary of Internal Affairs.